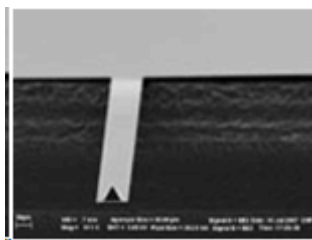


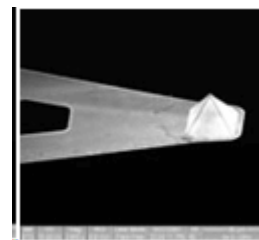
Diamond AFM Probes

- Si SiN AFM Probe 100 가
- Si SiN AFM Probe 가
- 20nm 30nm 20nm
-
-

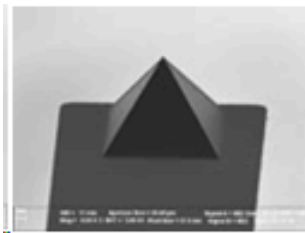
NaDia All Diamond AFM Probe



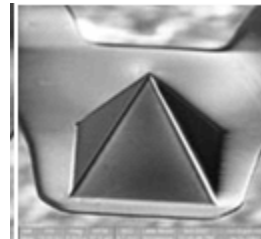
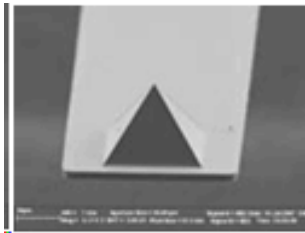
Rectangular Cantilever



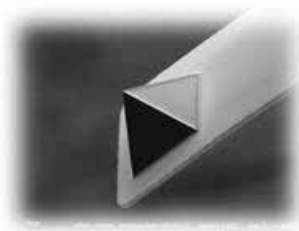
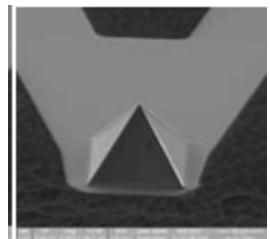
Triangular Cantilever



Rectangular tip





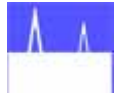

Triangular tip



NaDia All Diamond AFM Probe

ND-CTC Series : Conductive All Diamond Probe

Tip		Cantilever	
Shape	(111) Pyramid	Tip Setback	9 um
Height	5.66 um	Coating	60 nm reflective aluminum coating
Radius	15 - 30 nm (nominal)	Curvature	Typically less than 3 degrees
Material	Conductive UNCD	Curvature	Standard size Pyrex (3.6 x 1.5 x 0.5 mm)

Model	Chip Image	Cantilever	Force Constant (N/m)	Frequency (kHz)	Length (um)	Width (um)	Thickness (um)
ND-CTCR1-2		Short Medium Long	0.35 0.17 0.04	35 17 12	225 325 425	30 40 20	1 1 1
ND-CTCR2-2		Short Medium Long	0.23 0.08 0.05	40 12 8	225 425 500	20 40 40	1 1 1
ND-CTCT1-2		Short Long	1.28 0.46	48 24	200 300	25 41	1 1
ND-CTCT2-2		Short Long	0.71 0.04	50 23	200 300	17 23	1 1




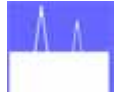
ND-DYI Series : Dynamic Mode All Diamond Probe

Tip		Cantilever	
Shape	(111) Pyramid	Tip Setback	9 um
Height	5.66 um	Coating	60 nm reflective aluminum coating
Radius	15 - 30 nm (nominal)	Curvature	Typically less than 3 degrees
Material	UNCD	Curvature	Standard size Pyrex (3.6 x 1.5 x 0.5 mm)

Model	Cantilever	Force Constant (N/m)	Frequency (kHz)	Length (um)	Width (um)	Thickness (um)
ND-DYIRS-4	1 Cantilever per chip	34	310	120	33	2.5
ND-DYIRL-4	1 Cantilever per chip	28	240	130	33	2.5

ND-CTI Series : Contact Mode All Diamond Probe

Tip		Cantilever	
Shape	(111) Pyramid	Tip Setback	9 um
Height	5.66 um	Coating	60 nm reflective aluminum coating
Radius	15 - 30 nm (nominal)	Curvature	Typically less than 3 degrees
Material	Conductive UNCD	Curvature	Standard size Pyrex (3.6 x 1.5 x 0.5 mm)

Model	Chip Image	Cantilever	Force Constant (N/m)	Frequency (kHz)	Length (um)	Width (um)	Thickness (um)
ND-CTIR1-4		Short Medium Long	0.35 0.17 0.04	35 17 12	225 325 425	30 40 20	1 1 1
ND-CTIR2-4		Short Medium Long	0.23 0.08 0.05	40 12 8	225 425 500	20 40 40	1 1 1
ND-CTIT1-4		Short Long	1.28 0.46	48 24	200 300	25 41	1 1
ND-CTIT2-4		Short Long	0.71 0.04	50 23	200 300	17 23	1 1